



# Mezzanine Floor Specialists



Innovative designs & technical know-how



with a product range to match



# Industrial, Commercial & Retail Mezzanine Floors

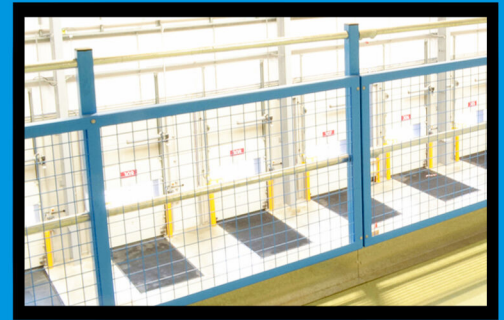
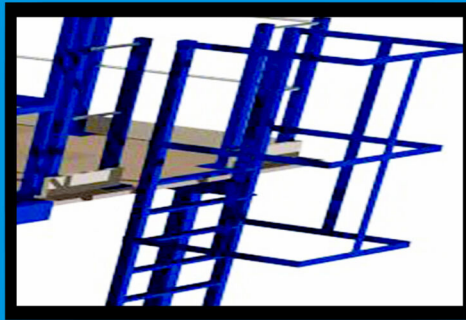
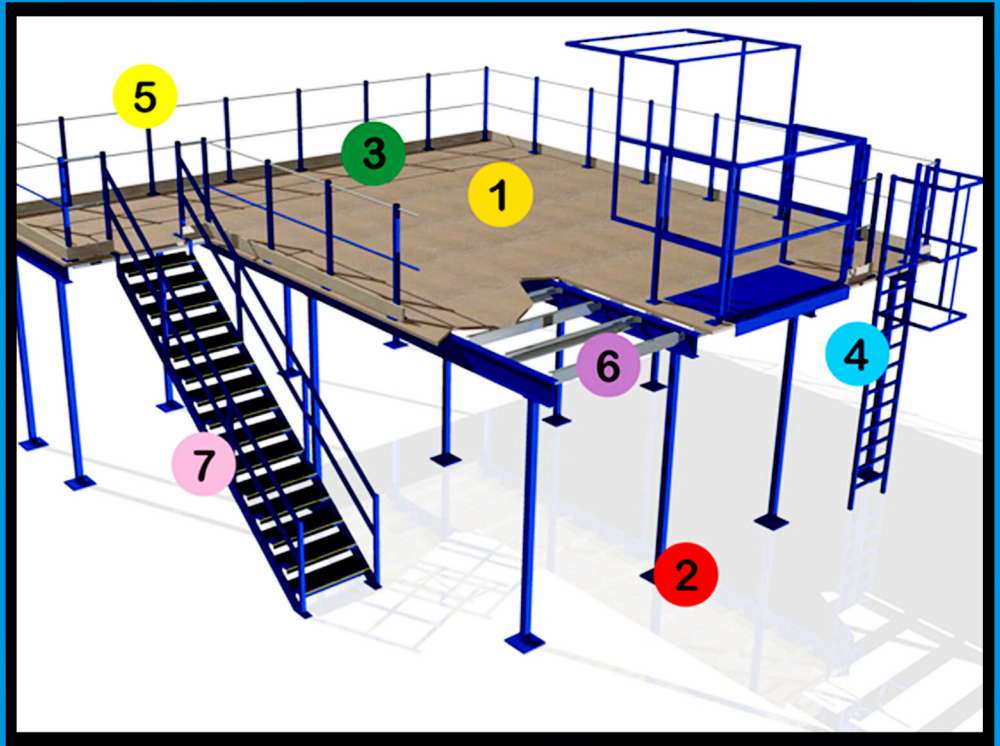
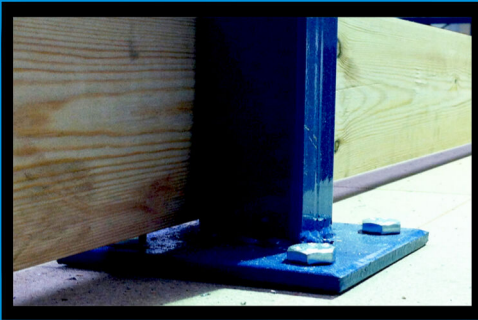
Our workshops manufacture a full range of floor types from the small to the enormous. We also have our own fabrication facilities who work closely with our designers, to provide fluidity between all areas of manufacturing.

Using the latest CAD technology, features such as raised storage levels, offices and staircases can be clearly seen. Below the mezzanine, racking can be incorporated to maximise cost and effective space.

With steel columns and support beams, we offer a choice of deckings to suit all applications. We also adhere to local authority regulations and codes of practice, in regards to fire protection.

Our skilled installation teams work with the minimum of disruption, allowing your business to keep running. Our design also allows for extensions to be added at a later date, when needs arise.





- 1** Steel threaded tension bars prevent the purlins spreading under load, where the span exceeds 2.50m.
- 2** Large area foot plates provide solid floor anchoring, secured with 4 bolts. Flush fixings also available.
- 3** 4 bolt fixings secure the handrail uprights to the deck for additional strength & security.
- 4** Square steel section cat ladder provides alternative access to the deck.
- 5** All handrails are galvanised tube, to give overall strength & safety. Mild steel square section handrails are also available.
- 6** Heavy duty standard sections for maximum economy where headroom permits.
- 7** Open tread staircase with mild steel treads, box section stringers, handrails & supports.

# Mezzanine Floors Technical Specification

## Structural Floor



**Length / Width / Height**  
To individual design & requirements.

**Column Spacing**  
By design. Practical maximum  
12.2 x 4.25m. Optimum 3.25 x 4.25m.

**Main Beam**  
Hot rolled steel.

**Columns**  
Tubular or 1 section hot rolled steel.

**Secondary Joists**  
Cold rolled galvansied.

**Loading**  
2.5 - 38.0 KN/m<sup>2</sup>, (50 - 800 lb/ft<sup>2</sup>)  
normally 4.8KN/m<sup>2</sup> (100 lb/ft<sup>2</sup>).

**Staircase**  
Fully welded all steel stringers &  
handrailing. Open tread type with  
steel treads.

**Flooring**  
For wheeled traffic such as pallet  
trucks or point loads, specifically  
designed 38mm very heavy duty  
particle board. Also a choice of  
tongued & grooved ply, tongued &  
grooved flooring grade chipboard,  
cold formed steel planks, open mesh  
steel or chequer plate etc.

**Handrailing**  
Hot rolled tubular top & knee rails  
supported by square tubular hot rolled  
posts with hinged loading gates when  
specified.

**Finish**  
Hot rolled sections in blue paint with  
the remainder self colour. Special  
finishes also available.

**Optional Items**  
Ceilings, fascias, cat ladders, safety  
gates, top & mid landings, non slip  
surfaces, partitioning, kick boards &  
fire protection.

## Rack Supported Storage Area



**Mezzanine Manufacturing.**  
Unit J, Falconer Road,  
Haverhill, Suffolk. CB9 7XU.

**Telephone: 01440 768 772**

**Email: [contact@mezzaninemanufacturing.co.uk](mailto:contact@mezzaninemanufacturing.co.uk)**